

3D in ArcGIS



Inge van den Meiracker &
Niels van der Vaart

GIS

CREATING THE WORLD
YOU WANT TO SEE

ArcGIS

Is a Complete 3D GIS
Managing, Integrating and Applying All Types of 3D Content



**Powerful
Capabilities**

Visualization
Meshes
Reality Mapping
Analytics
3D Features
Editing
Immersive Experience
Data Management
Design
Surfaces
Basemaps
Parametric Modeling
Voxels

BIM

Smart City



Emergency
Evacuation



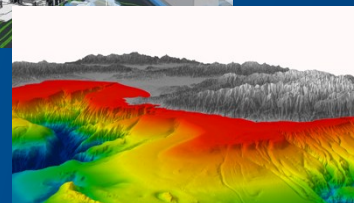
Visualization

Analytics



Asset Management

AEC



Terrain



Mobile / Field



Operations



Building Review

A Platform for Living Digital Twins

3D Capabilities Are Advancing Across ArcGIS

Visualization

High-Quality Visual Effects



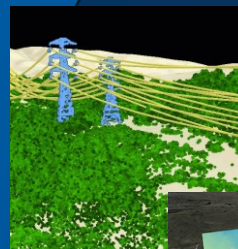
Global
(Earth)



3D Heat Maps

Analysis

Point Cloud Classification
(Deep Learning)



Flood Simulation

3D Interpolation
(Voxels)



Formats & Data

3D Mesh



new



3D Basemaps



3D Object Feature Layer

Editing



Updating with 3D Models



Authoring Voxel Layers

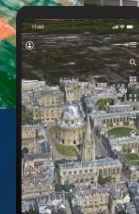
Clip & Ship 3D Scenes

Immersive Experiences

Virtual Reality



Game Engine Integration
(Unity, Unreal)



AR Scene



New & Improved

- 3D Basemap
- Animated Symbols
- Line of Sight
- Visual & Weather Effects
- Floor Awareness
- GeoJSON Support
- Clip & Ship
- Voxel Layers on the Web
- Game Engines (Maps SDK)
- Heat Maps

Coming

- Flood Simulation
- Transportation Analysis
- Improved Web Editing
- 3D Tiles

A Foundation for Living Digital Twins



Levende Atlas - Thema's



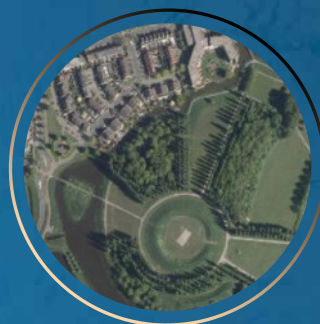
3D



Basiskaarten



Basisregistraties



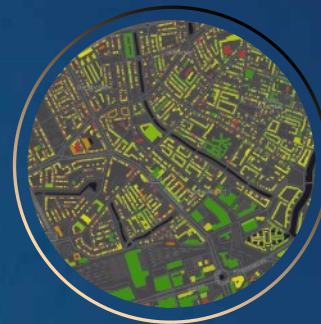
Beeldmateriaal



Coronavirus



Demografie



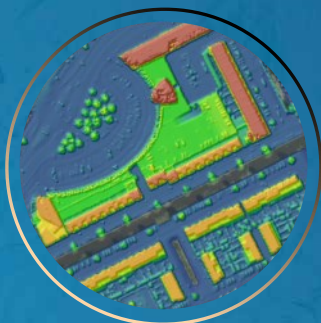
Energie



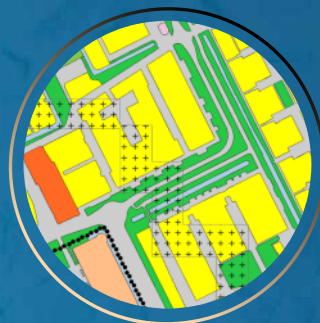
Grenzen



Historische kaarten



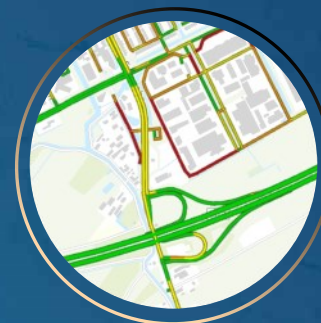
Hoogte



Leefomgeving



POI's



Verkeer & Infrastructuur



Weer & Klimaat

3D aanbod

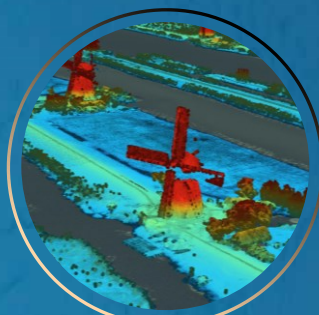
Levende Atlas



Terrein



3D basiskaart



Puntenwolken



Bomen



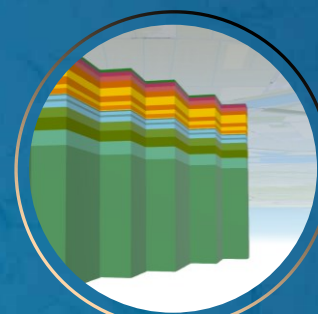
Windturbines



Inrichtingselementen



Gebouwen



Ondergrond

Nieuw!

Premium aanbod



3D-Mesh

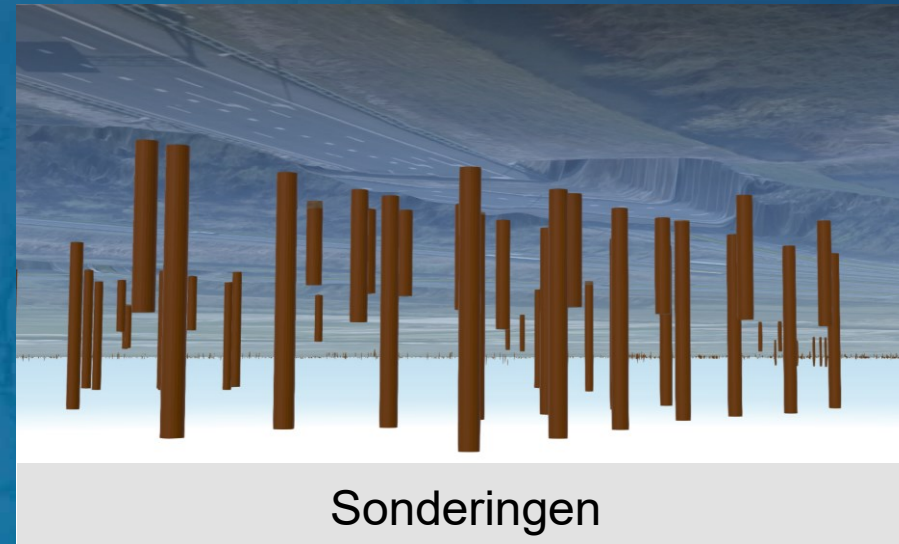
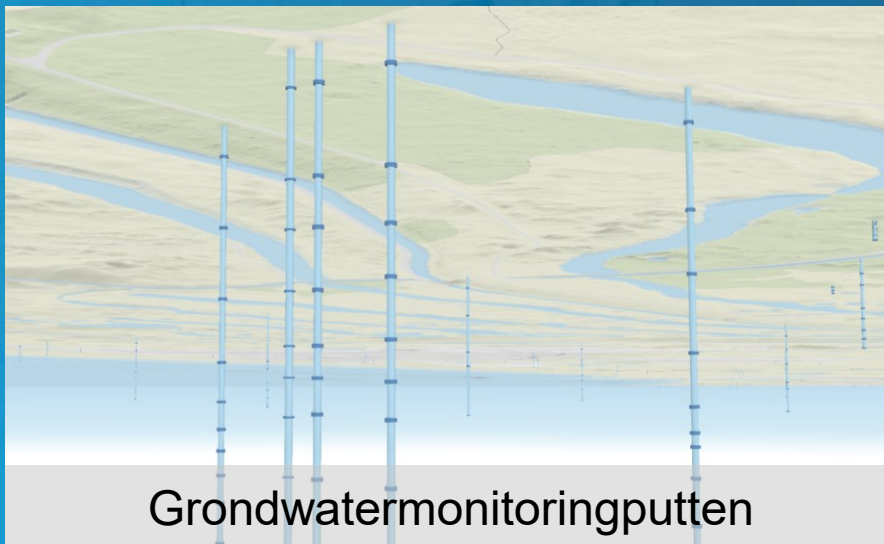
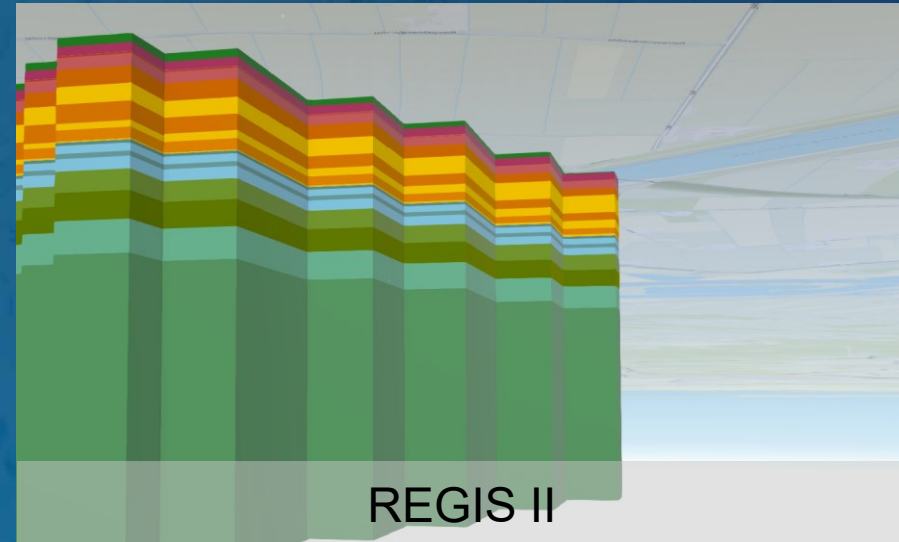
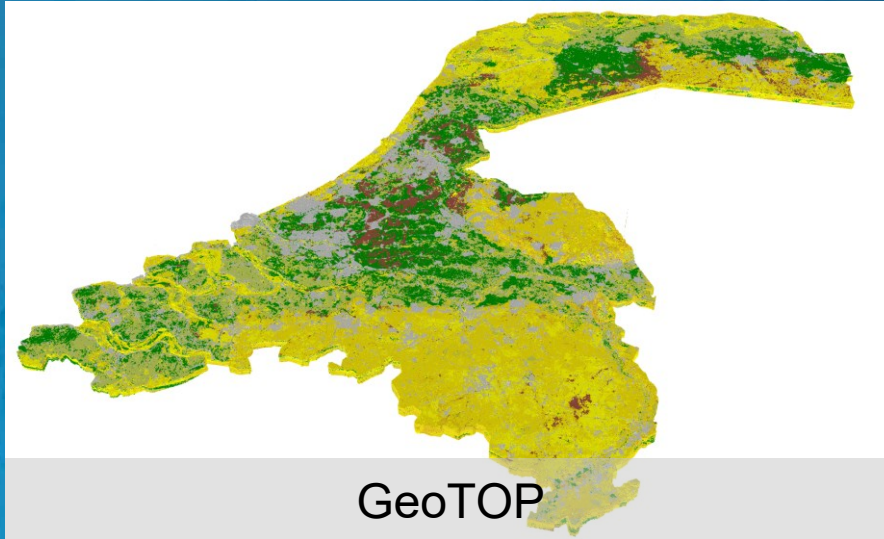


SPOTinfo
PandenPlus



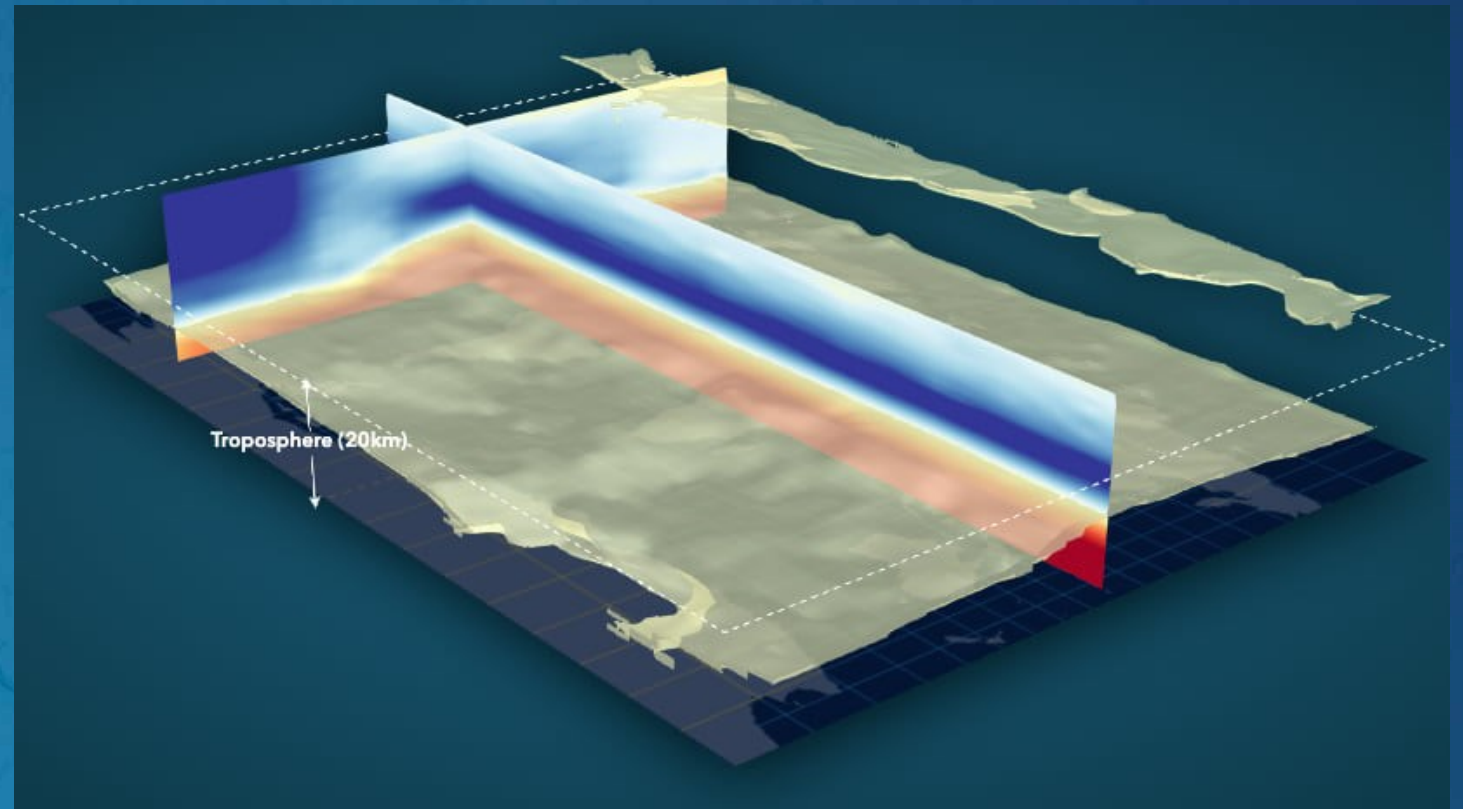
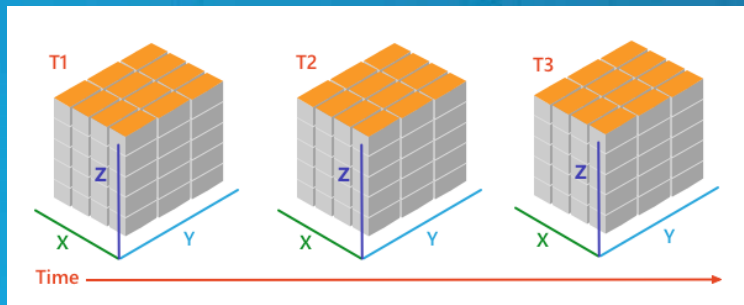
True Ortho & DSM

BRO 3D webservices



Voxel Scene Layer

- 3D volumetrisch raster
- Grote hoeveelheden data
- Volumes of oppervlakten



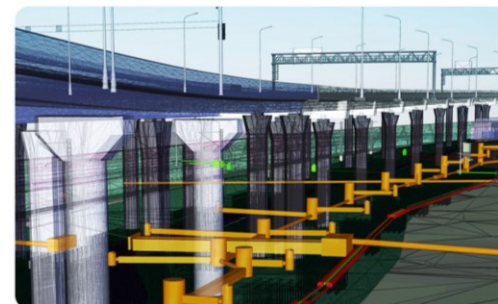


Living Digital Twin

Samenwerken aan een slimme en duurzame wereld

Wat is Living Digital Twin?

In de Living Digital Twin van Nederland werken we samen aan een slimme en duurzame wereld. Door de combinatie van een digital twin – een digitale kopie van de werkelijkheid – met de kracht van de community biedt de Living Digital Twin dé oplossing voor ruimtelijke vraagstukken. Met een breed data-aanbod en slimme software is de Living Digital Twin de meest complete omgeving om samen te werken aan het Nederland van de toekomst.





Specifieke oplossingen

Aanvullend aanbod

Fundament

Living Digital Twin



www.livingdigitaltwin.nl